

1

2

3

4

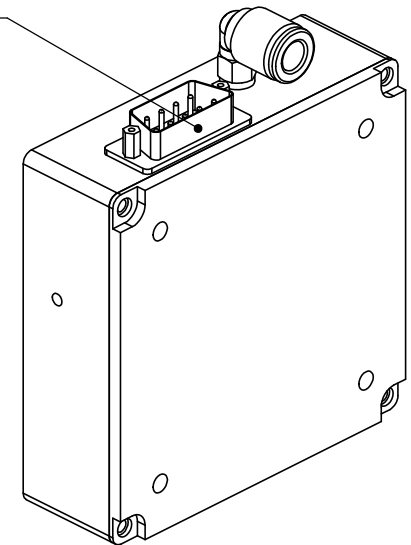
5

REVISION TABLE

REV	ECN#	DESCRIPTION	REV BY	APPROVED	DATE
---	---	Original Drawing	SDC	MPW	06-26-15

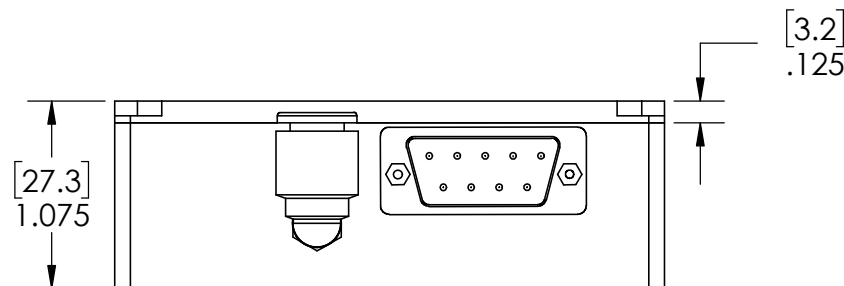
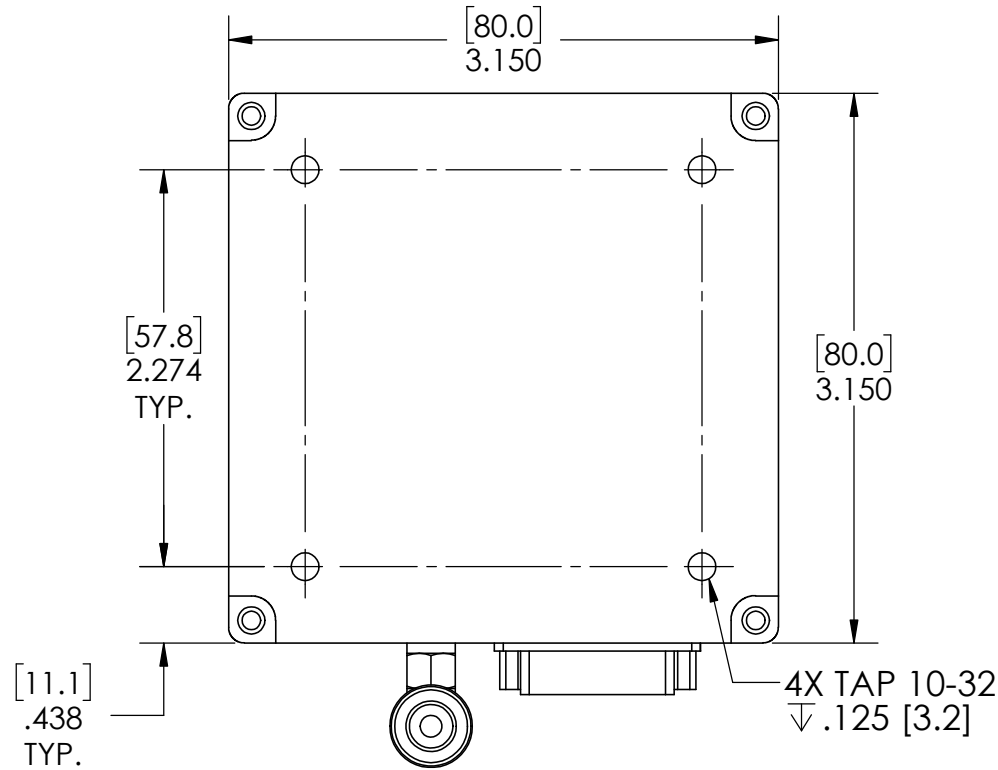
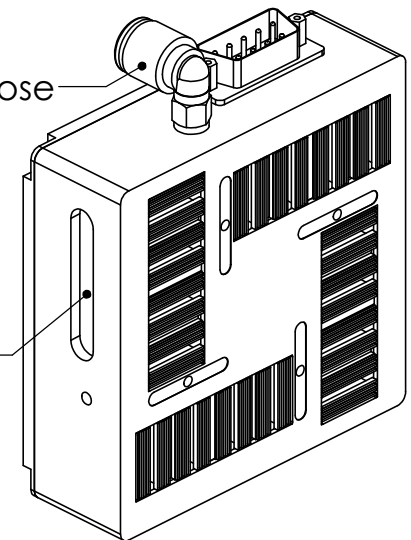
Motor Power
DB-9 Male

Pin #	Function
1	XA+
2	XA-
3	XB+
4	XB-
5	Ground
6	YA+
7	YA-
8	YB+
9	YB-



Air Inlet
0.25" OD Air Hose

Lifting Tool Slot



H2W Technologies, Inc.
Santa Clarita, CA 91350 USA
Tel: (661) 291-1620
www.h2wtech.com

These drawings and specifications are the property of H2W Technologies, Inc. They are issued in confidence and shall not be reproduced, copied, or used without written permission from H2W Technologies, Inc.

UNLESS SPECIFIED OTHERWISE:
All dimensions are in inches
Standard Tolerances are as follows
XXX ±.005 ANGLES ±.1°
.XX ±.010 FILLETS .010
.X ±.020 CORNERS .010
Remove All Burrs and Sharp Edges

**FOR
REFERENCE
ONLY**

MATERIAL

FINISH

TITLE

**Dual Axis Linear Stepper Motor
Model #: LMDS0602-2A1**

DWG # **13-0003**

REV ----

DATE 6-26-15 SHEET 1 of 2

1

2

3

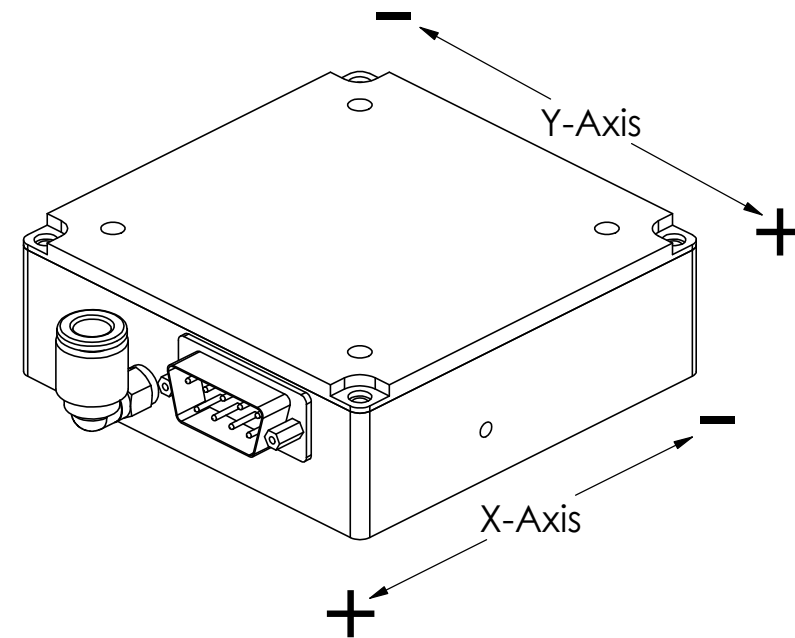
4

5

A

A

Motor Specifications LMDS0602-2A1		
General		
Static Force	lbs [N]	3.3 [15]
Force @ 40 in/sec	lbs [N]	1.5 [6.7]
Amps/Phase	Amps	2
Continuous Power	Watts	12.4
Electrical		
Resistance	Ohms	3.1
Inductance	mH	2.4
Electrical Time Constant	msec	1.06
Mechanical		
Bearing Type	Air	
Nominal Air Pressure	60 psi	
Airflow	CFM [L/min]	1.5 [42]
Attractive Force	lbs [N]	36 [160]
Forcer Mass	lbs [kg]	8.0 [3.6]



B

B

C

C

D

D



H2W Technologies, Inc.
Santa Clarita, CA 91350 USA
Tel: (661) 291-1620
www.h2wtech.com

These drawings and specifications are the property of H2W Technologies, Inc. They are issued in confidence and shall not be reproduced, copied, or used without written permission from H2W Technologies, Inc.

UNLESS SPECIFIED OTHERWISE:
All dimensions are in inches
Standard Tolerances are as follows
.XXX ±.005 ANGLES ±.1°
.XX ±.010 FILLETS .010
.X ±.020 CORNERS .010
Remove All Burrs and Sharp Edges

**FOR
REFERENCE
ONLY**

MATERIAL

FINISH

TITLE

Dual Axis Linear Stepper Motor
Model #: LMDS0602-2A1

DWG #

13-0003

REV

DATE

5-25-17

SHEET

2 of 2